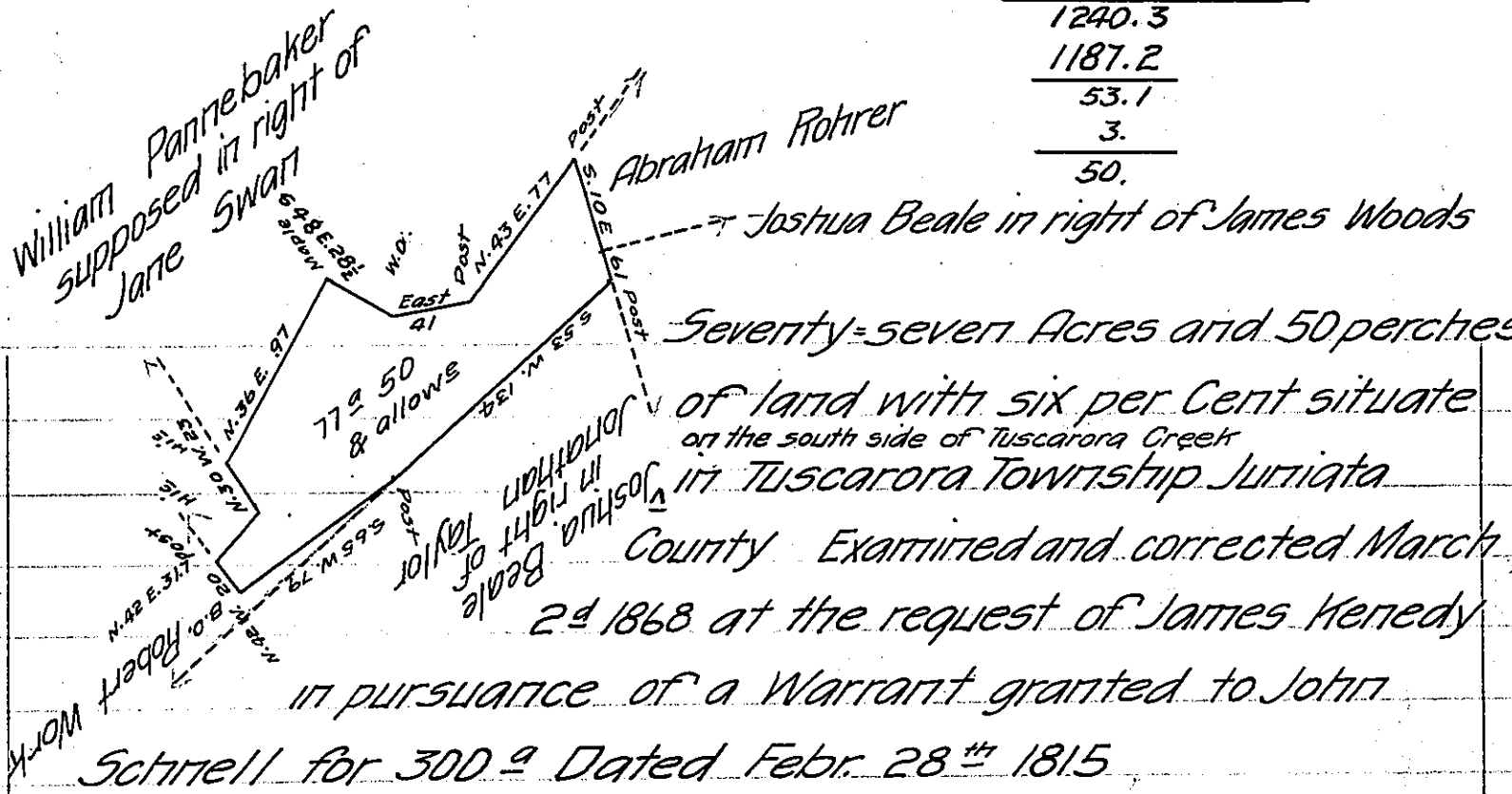


FORM NO. 1.

James Kennedy Tuscarora wt to John Schnell for 300^a Dated Feb^r 28th 1815

	N	S	E	W	M.D.	N. area	S. area
S 53 W 134		80.6		107.0	214.0		8624.20
S 65 W 79.		334.		71.6	357.2		9539.04
N 42 W 20.	149			134	384.0	5521.94	
N 42 E 31.7	236		21.2		362.8	8562.08	
N 30 W 23.	199			11.5	353.1	7026.69	
N 36 E 97	78.5		57.0		364.6	24146.60	
S 48 E 28½		19.1	21.2		307.6		4381.54
East 41			41.0		2294		
N 43 E 77	563		52.5		208.2	4149.31	
S 40 E 61		60.1	10.6		167.2		637.06
	193.2	193.2	203.5	203.5		49406.62	23181.84
						23181.84	
					½	26224.78	
					169.6	13112.39	772.50
						11872.	& allow ^s
						1240.3	
						1187.2	
						53.1	
						3.	
						50.	



To Jacob M. Campbell Esq^r
 Surveyor General
 Harrisburg Pa.

IN TESTIMONY that the above is a copy of the original remaining on file in the Department of Internal Affairs of Pennsylvania, made conformably to an Act of Assembly approved the 16th day of February, 1833, I have hereunto set my Hand and caused the Seal of said Department to be affixed at Harrisburg, this twentieth day of March 1907

Joseph P. Brown
 Secretary of Internal Affairs.